



# DEPAUL

Homelessness has no place

## **YOUTH HOMELESSNESS: PREVENTION THROUGH EDUCATION**

Our Education Programme for Key Stages 3, 4 and 5

# THE NEED FOR OUR WORK

Depaul UK is one of the largest youth homelessness charities in the UK, supporting those who have been homeless or are at risk of homelessness.

We know there are currently at least 120,000 young people experiencing or at risk of homelessness across the UK. A figure which has risen by 40% over the past 5 years [1] and is expected to continue growing significantly as a result of the pandemic and the current economic climate. Often, young people don't know where to turn for support, and are excluded from official statistics. Hidden homelessness is common, with many young people 'sofa-surfing', staying in temporary accommodation or unsafe places.

Experience of homelessness can disrupt or derail the future of a young person permanently, which is why at Depaul UK we are committed to reaching young people early. Working with education providers enables us to reach large numbers of young people. If we tackle issues early, we can prevent homelessness and more complex problems in the future and give young people the best start in life.

"People need to go into schools to talk about it. If someone had come to my school when I was younger, I might not have gone through what I did."

**Max, 21**, experienced months of rough sleeping due to family breakdown



Reference: [1] Centrepoin research, 2021

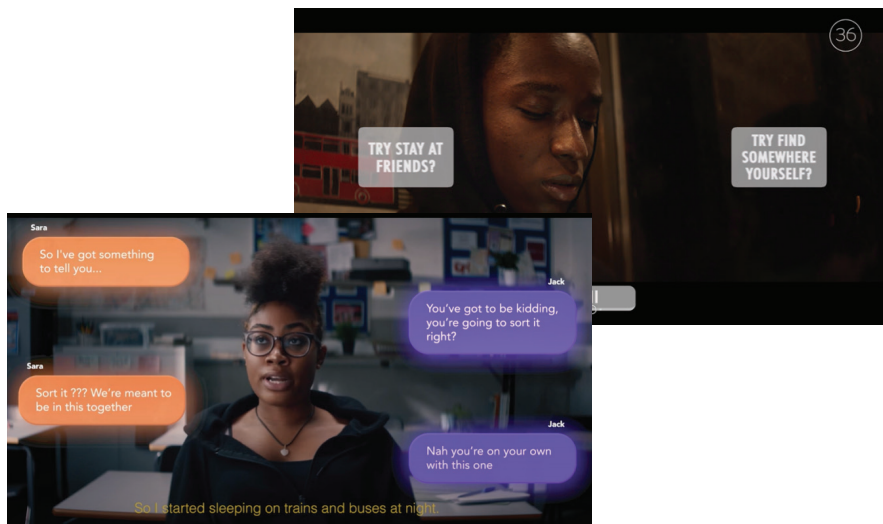


# THE PROGRAMME

We deliver bold, interactive and relatable workshops to young people across Key Stages 3, 4 and 5, to build their knowledge of youth homelessness and related issues. Our workshops are delivered by highly skilled and experienced facilitators. Using high-quality digital media and interactive discussions, we explore the realities of youth homelessness and the related issues young people face, ensuring they know when and how to get support at the earliest opportunity.

## THE CORE WORKSHOPS

Our workshops are aimed at all young people and each workshop has been specifically designed to deliver relevant and relatable content for each age group. Our interactive, hour-long workshops can be delivered to whole year groups at a time with the aim of working with students once in each Key Stage as the risks and issues in their lives and relationship change over time.



### Choices: Key Stage 3

Through an interactive film, students go on a journey, making decisions for the lead character who is experiencing homelessness, and influencing the outcome of the story. Students take part in workshop activities learning about family breakdown, healthy relationships and exploitation, recognising risk, and seeking support.

### Missing: Key Stage 4

Students watch a compelling mystery crime drama, exploring why teenager Ashley has gone missing from home. Students hear different accounts from key people in her life and search to find the answers to explain why she had to leave home. Missing explores a range of issues affecting teenagers' lives, from mental health to exploitation, sexuality, understanding the impact on their relationships at home and in the community, and the likelihood of them experiencing youth homelessness, alongside help and support available.

### Moving On: Key Stage 5

Focusing on students transition to adulthood, young people look in-depth at the reality of leaving home and their changing responsibilities, relationships, and decisions. Through a film with powerful and emotive testimonials from young people, covering issues such as domestic abuse, sexuality, and gang involvement, students understand the realities and risks associated with hidden homelessness and gain vital knowledge on their housing rights and options and support available.



"The videos were really well-pitched and struck a chord with the students."

**Teacher, Ark Walworth Academy**

"Both staff and students found our session with Depaul to be inspirational, informative and thought-provoking."

**Chaplain, Gumley House School**

## EXTENDED WORKSHOPS

Each of our workshops have the option to be extended to two hours, so we can delve deeper into the issues and topics raised in our core workshops.

## TARGETED INTERVENTION WORKSHOPS

We recognise that some young people are more vulnerable and at increased risk of family relationship breakdown and youth homelessness.

In response, we offer a series of linked targeted intervention workshops aimed at smaller groups of students and work in collaboration with school/college staff to identify students most at risk.

These workshops delve deeper into key themes to enable students to stay safe and maintain positive and healthy relationships in all areas of their lives, including:

- emotional literacy and mental wellbeing
- positive and healthy relationships
- managing conflict
- making safer choices



"I know that if I ever find myself in a worrying situation, I always have people in my life I can trust and talk to."

**Year 8 student, Burnside College**

"It really helped to be able to speak about emotions and thoughts, which I don't usually get the opportunity to do."

**Year 12 student, Burnside College**



# TRAINING FOR PROFESSIONALS

Professionals working with young people play a vital role in preventing youth homelessness. By equipping professionals who work with young people every day to recognise and respond to early indicators and associated risks, young people can access appropriate support at the earliest opportunity.

This training is aimed at all professionals who may have contact with young people, and will be particularly relevant for those with specific responsibilities for safeguarding and student support. Our training is delivered over a half-day session, lasting approximately three hours. We can be flexible in our delivery to accommodate your needs and run a series of shorter sessions if preferred.



"I now feel more confident to advocate for our young people in relation to youth homelessness."

**Safeguarding Lead, Croydon College**



# CONTACT, ENQUIRIES AND BOOKINGS

We are committed to reaching as many young people as possible, so please do get in touch to discuss how we can tailor our work to best suit your needs.

Individual region contact details are as follows:

- **London:** [education.lse@depaulcharity.org.uk](mailto:education.lse@depaulcharity.org.uk)
- **South Yorkshire:** [education.sy@depaulcharity.org.uk](mailto:education.sy@depaulcharity.org.uk)
- **Greater Manchester:** [education.gm@depaulcharity.org.uk](mailto:education.gm@depaulcharity.org.uk)
- **North East:** [education.ne@depaulcharity.org.uk](mailto:education.ne@depaulcharity.org.uk)

For more information and to watch trailers for our workshops, visit:  
**[depaul.org.uk/projects/education-workshops-for-schools](http://depaul.org.uk/projects/education-workshops-for-schools)**

Depaul UK  
Sherbourne House  
34 Decima Street  
London, SE1 4QQ

**[www.depaul.org.uk](http://www.depaul.org.uk)**



Registered Charity Number: 802384. Company Number: 02440093 (Registered in England and Wales)  
Registered with the Office of the Scottish Charity Regulator Number: SC049244